



# WEST FIGHT ON

**SATURDAY, SEPTEMBER 9, 2023**

**SHELBY FARMS PARK**

PRESENTED BY:



SPONSORED BY:



## **PACKET PICK UP**

Packet Pick Up is scheduled for **Thursday, September 7th**, at Memphis Hightailers Clubhouse, 397 Cumberland (across from Wiseacre Broad Street) from 3pm - 6pm.

Packet Pick Up will open at 5:30am the morning of the event on Sept 9th at Shelby Farms.

**Unable to attend packet pick up?** Have your shirt shipped for an additional fee that can be added during the registration process. Shirts will be shipped after the event.

# Welcome

to the

## 11th Annual West Fight On

benefiting West Cancer Foundation.

### Giving Back to Make a Difference

Because of you and your generous support, West Cancer Foundation can provide life-saving cancer services to those in need in our community.



Free breast cancer screenings



Free transportation to and from cancer appointments and treatments



Free post-mastectomy garments, prostheses and wigs



Free lymphedema compression garments

### Funding the Future of Oncology Care in our Community

West Cancer Foundation provides grants to fund the brightest and most promising oncology physicians and researchers at the University of Memphis and the University of Tennessee Health Science Center.

Thanks to our generous sponsors and donors like you, West Fight On has raised almost \$1.5 million dollars to break down barriers in the fight against cancer.

**ONE LOVE, ONE HEART, *One Fight* AGAINST CANCER.**






# WEST FIGHT ON

## *Schedule of Events*

- 5:30 a.m. Packet Pick Up Opens
- 6:45 a.m. Cycle Opening Ceremony
- 6:55 a.m. 20 Mile / 5K Combo Starts
- 7:00 a.m. 60 Mile Ride
- 7:05 a.m. 40 Mile Ride
- 7:10 a.m. 20 Mile Ride

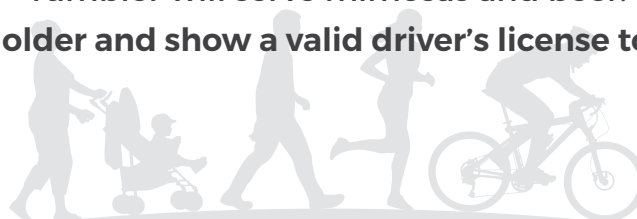
Please allow 30-40 minutes to park and walk to start line

- 8:20 a.m. Run & Walk Opening Ceremony  
Warm Up with Orange Theory Lakeland   
5K Run/Walk  
One Mile Walk
- 9:30 a.m. Survivor-Fighter Ceremony  
Join us for a special Survivors/Caregiver Ceremony featuring legendary music producer Boo Mitchell and Royal Studios breakout star Lina Beach!
- 10:00 a.m. 5K Awards & Top Fundraisers Awards Ceremony

**Music, food, vendors, kids' activities, and more will be available throughout the day!**

All participants will receive a race bib. The bib is your entry to the food and beverage trucks. Food provided by Good Groceries, The Genre, and Broken Cup Cafe. Tipsy Tumbler will serve mimosas and beer.

**You must be 21 or older and show a valid driver's license to be served alcohol.**



# Thank You!

## PRESENTING SPONSOR



## DIAMOND



## GOLD



## SILVER



## BRONZE



## CHAMPION



# Thank You!

## FIGHTER



## SUPPORTER



## TRIBUTE



## FRIEND



## In-Kind

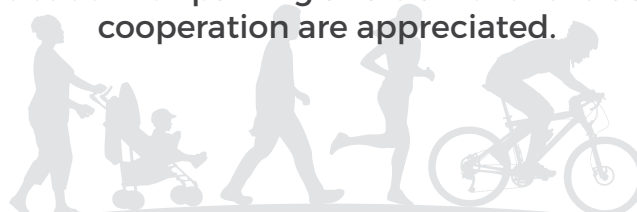


# SHELBY FARMS PARK PARTICIPANT ACCESS & PARKING

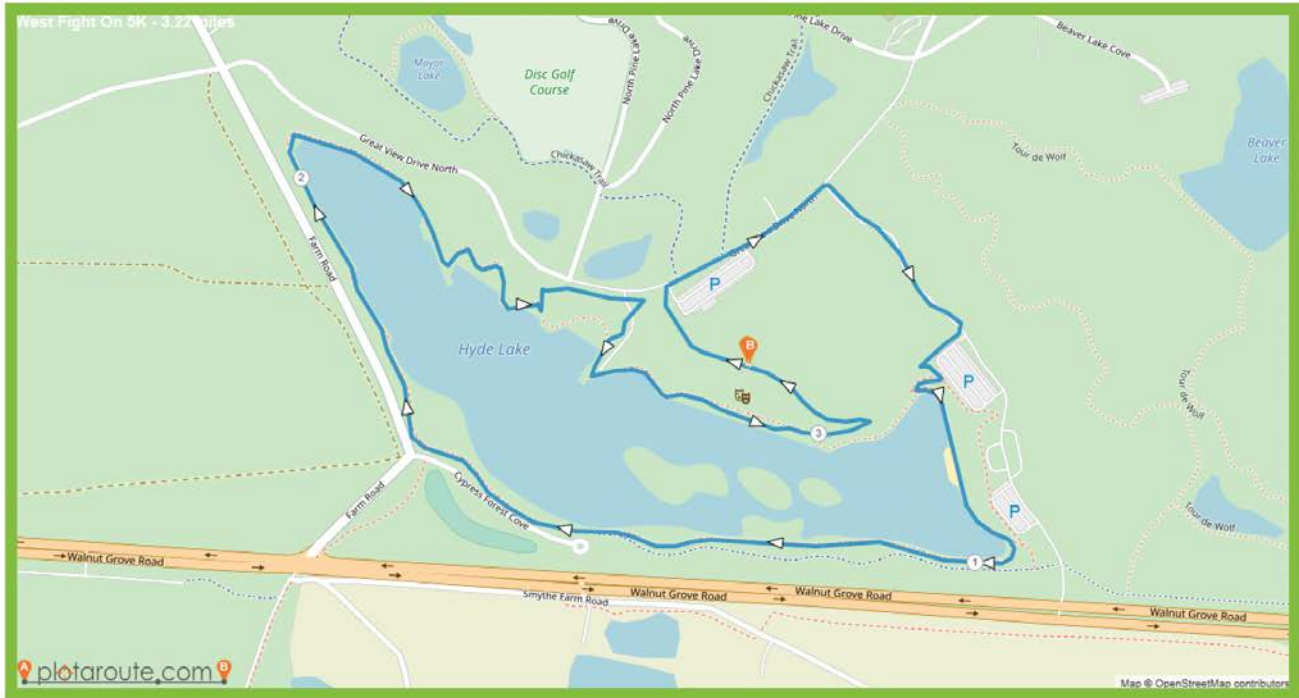


All entrances to the park will be closed to the public **EXCEPT** for the **MULLINS STATION ENTRANCE**. Farm Road and Walnut Grove entrances will be CLOSED. Please allow extra time to enter, park, and walk to the event site. Event Center/Coastal Fish entrance also closed.

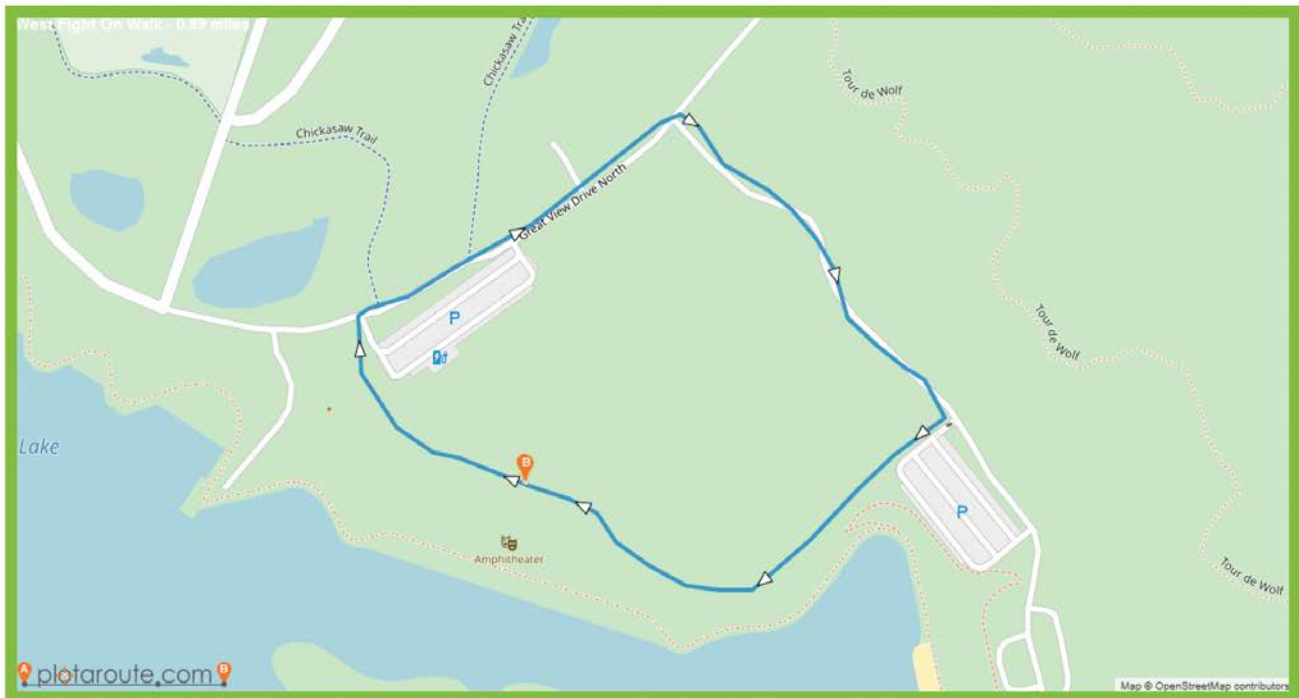
Some of the park roads will be closed for the event, and a route you may be familiar with may not be accessible that morning, so please ensure that you allow at least 45 minutes before the start of your race in order to navigate through the park to the parking areas. Staff and volunteers will be on hand to direct you, along with signage. We are thankful to have the assistance of Shelby Farms Park staff and Southern Valet to assist us with parking and traffic for the day. Your patience and cooperation are appreciated.



# 5K RUN ROUTE

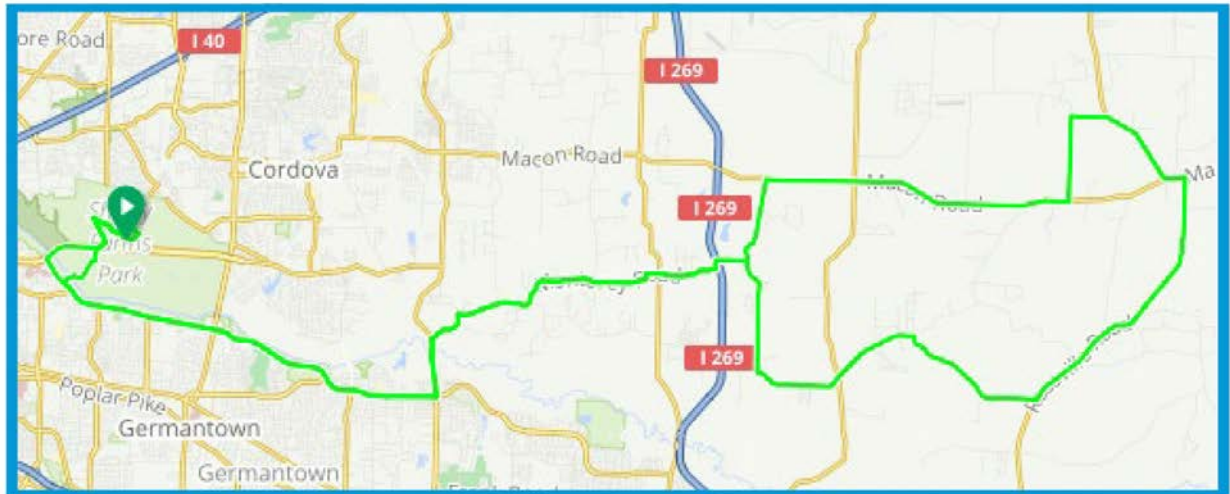


# 1 MILE WALK ROUTE



# 60 MILE CYCLE MAP

More details: <https://ridewithgps.com/routes/40611241>



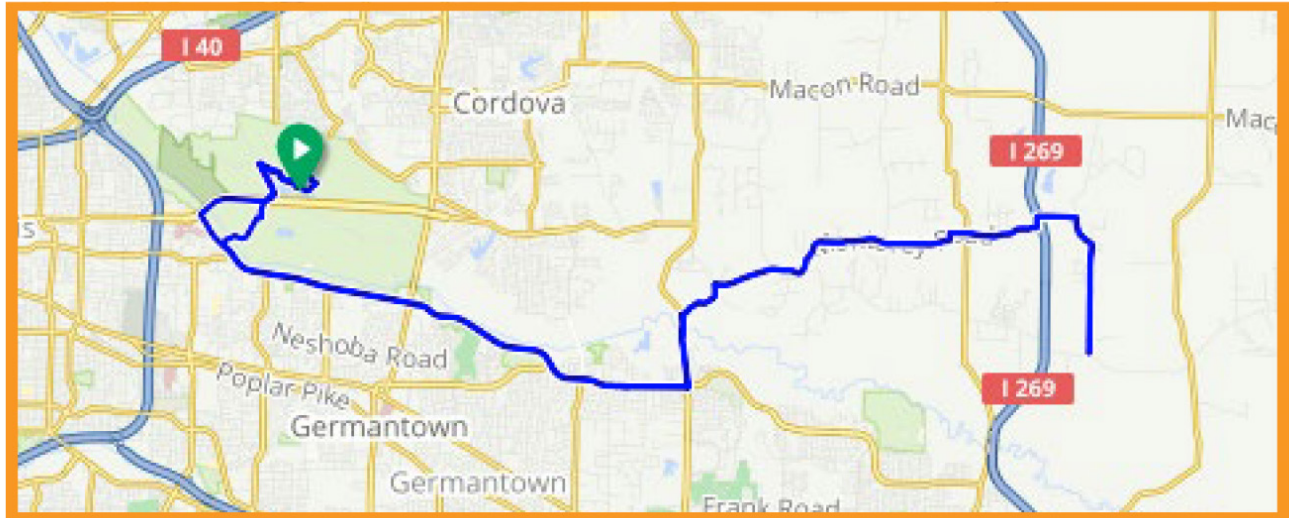
- Left onto Great View Dr E
- Left onto Great View Dr N
- Left onto Farm Rd
- Right onto Walnut Grove Rd
- Slight Right to Exit Ramp
- Left onto Humphreys Blvd
- Straight Wolf River Blvd changes names to Humphreys Blvd
- Left onto Houston Levee Rd
- Right onto Houston Hill Rd
- Right onto Raleigh Lagrange Rd E
- Slight Left onto Monterey Rd
- **ALL CYCLISTS MUST MAKE THE LEFT HAND TURN AT FISHERVILLE RD BEFORE 8:30AM TO REMAIN ON PACE. IF YOU ARRIVE AFTER 8:30AM YOU WILL BE DIRECTED TO TURN RIGHT AND JOIN THE 40 MILE ROUTE.**
- Left onto Fisherville Rd
- **SAG Stop on Left across from Herb Parsons Entrance**
- Right onto Macon Rd
- Left onto Payne Rd
- Right onto Clay Pond Dr
- Right onto Oakland Rd
- Left onto Macon Dr
- Right onto TN-194 S / Rossville Rd.
- Straight to stay on Rossville Rd
- Slight left to stay on Rossville Rd
- Right onto Raleigh Lagrange Dr
- Slight Left to stay on Raleigh Lagrange Dr
- Right onto Fisherville Rd
- **SAG Stop enter Kirks Christian Church from Fisherville Rd**
- Left onto Monterey Rd
- Straight Monterey Rd changes to Raleigh Lagrange Rd E
- Left onto Houston Hill Rd
- Left onto S Houston Levee Rd
- Right onto Wolf River Blvd
- **SAG Stop at Houston Middle School**
- Straight Wolf River Blvd changes names to Humphreys Blvd
- Right into Wolf River Greenway Humphrey Center Trailhead
- Right onto Wolf River Greenway
- Right towards Million Dollar Bridge and Shelby Farms Park
- Straight to cross Walnut Grove Rd into Shelby Farms Park. **MUST FOLLOW TRAFFIC SIGNAL!**
- Continue onto Greenline Bike Path
- Left onto Greenline Bike Path
- Stay on Bike Path
- Right on path in front of Visitor Center
- **LEFT TO FINISH LINE**





# 40 MILE CYCLE MAP

More details: <https://ridewithgps.com/routes/40618482>



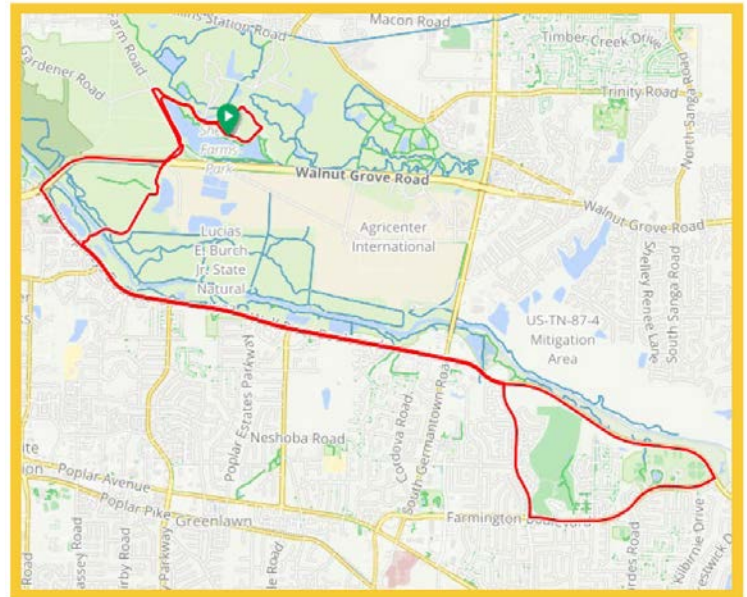
- Left onto Great View Dr E
- Left onto Great View Dr N
- Left onto Farm Rd
- Right onto Walnut Grove Rd
- Slight Right to Exit Ramp
- Left onto Humphreys Blvd
- Straight Wolf River Blvd changes names to Humphreys Blvd
- Left onto Houston Levee Rd
- Right onto Houston Hill Rd
- Right onto Raleigh Lagrange Rd E
- Slight Left onto Monterey Rd
- Turn right onto Fisherville Rd
- **SAG Stop at Kirks Christian Church**
- Turn Around at SAG Stop Kirks Christian Church
- Left onto Monterey Rd
- Straight Monterey Rd changes to Raleigh Lagrange Rd E
- Left onto Houston Hill Rd
- Left onto S Houston Levee Rd
- Right onto Wolf River Blvd
- **SAG Stop at Houston Middle School**
- Right towards Million Dollar Bridge
- Straight Wolf River Blvd changes names to Humphreys Blvd
- Right into Wolf River Greenway Humphrey Center Trailhead
- Right onto Wolf River Greenway and Shelby Farms Park
- Straight to cross Walnut Grove Rd into
- Shelby Farms Park. **MUST FOLLOW TRAFFIC SIGNAL!**
- Continue onto Greenline Bike Path
- Left onto Greenline Bike Path
- Stay on Bike Path
- Right on path in front of Visitor Center
- **LEFT TO FINISH LINE**



# 20 MILE CYCLE MAP

More details: <https://ridewithgps.com/routes/40618313>

- Left onto Great View Dr E
- Left onto Great View Dr N
- Left onto Farm Rd
- Right onto Walnut Grove Rd
- Slight Right to Exit Ramp
- Left onto Humphreys Blvd
- Straight Wolf Rive Blvd changes names to Humphreys Blvd
- Right onto Farmington Blvd
- Right onto Kimbrough Rd
- Left onto Wolf River Blvd
- Continue onto Humphreys Blvd
- Right onto Wolf River Greenway Humphrey Center Trailhead
- Right onto Wolf River Greenway
- Right towards Million Dollar bridge and Shelby Farms Park
- Straight to cross Walnut Grove Rd into Shelby Farms Park. **MUST FOLLOW TRAFFIC SIGNAL!**



- Continue onto Greenline Bike Path
- Left onto Greenline Bike Path
- Stay on Bike Path
- Right on path in front of Visitor Center
- **LEFT TO FINISH LINE**



# SAG STOPS

## SAG 1

### HOUSTON MIDDLE SCHOOL

9400 Wolf River Blvd, Germantown, TN 38139

*Opens 7 a.m. Closes 12:30 p.m.*

40 AND 60 MILE ROUTES

## SAG 2

### LOT ACROSS FROM HERB PARSONS LAKE

1150 Fisherville Road, Collierville, TN 38017

*Opens 7:30 a.m. Closes 12 p.m.*

60 MILE ROUTE

## SAG 3

### KIRKS CHRISTIAN CHURCH

6050 Raleigh LaGrange Dr. Collierville, TN 38017

*Opens 7:30 a.m. Closes 12 p.m.*

40 AND 60 MILE ROUTES





# — Taking care of people is at the *heart* of everything we do.

Sedgwick is a leading provider of technology-enabled risk, benefits and integrated business solutions. Each year, millions of people and organizations count on us when something unexpected happens. We are proud to extend this legacy of caring through our support of the West Cancer Foundation.



*We honor the many brave survivors among our colleagues, clients and partners, we stand with those still challenging cancer and we pay tribute to those who are no longer able to fight on.*

***At Sedgwick, caring counts.***

LEARN MORE

[www.sedgwick.com](http://www.sedgwick.com)



---

# Highland Capital

---

MANAGEMENT, LLC

Highland takes pride that our clients have the confidence and trust in our investment process and services which has enabled us to serve them for over thirty years. At Highland Capital, client relationships are highly personal, valued, and service oriented.

Highland Capital has always been and will always be a proud supporter of the  
**WEST CANCER CENTER**

**WEST  
CANCER**

---

Highland Capital

---

MANAGEMENT, LLC

Highland Capital Management, LLC  
850 Ridge Lake Blvd  
Suite 205  
Memphis, TN 38120

[www.highlandcap.com](http://www.highlandcap.com)



**(901).761.9500**




# Proudly supporting **West Fight On**



©2022 First Horizon Foundation.  
The First Horizon mark is owned by First Horizon Corporation and is licensed to  
First Horizon Foundation, a Tennessee non-profit corporation.

[firsthorizonfoundation.com](http://firsthorizonfoundation.com)

**WEST**  
CANCER CENTER  
& RESEARCH INSTITUTE

**AT WEST CANCER,  
WE CAN**

**2023 CASTLE CONNELLY  
TOP DOCTORS**

At West Cancer Center, we are dedicated to making a difference in the lives of cancer patients and their families. As a leading oncology network, we combine cutting-edge research with compassionate care to provide comprehensive support and treatment options for all those affected by cancer.



[westcancercenter.com](http://westcancercenter.com) | 901.683.0055

# CANCER CARE.

## DOWN TO A MOLECULAR SCIENCE.

## Comprehensive Tumor Profiling

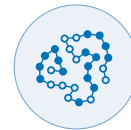
As the pioneer in tumor profiling and leading molecular information company, Caris Life Sciences® provides access to the highest quality, advanced science. Caris molecular profiling assesses DNA, RNA and proteins to reveal a molecular blueprint and guide more personalized treatment decisions.



DNA



RNA



Protein

Where Molecular Science Meets Artificial Intelligence.

Learn more at [CarisLifeSciences.com](https://CarisLifeSciences.com).

©2023 Caris Life Sciences. All rights reserved. 09 AUG 2023



## THIS IS **LIVING WITH** CANCER™

This Is Living With Cancer™ is a program for people living with cancer and those who love them. We provide support and resources for all, with a growing focus on underserved communities who may experience challenges in access to care.

### GET IT DONE

#### Cancer screenings and follow-ups can't wait

Find tools to help guide conversations with your doctor.

### LIVE WELL

#### Nutrition and wellness tips

Learn about healthy living and find resources to help you manage your mental health.

### AS WE AGE

#### Resources for adults 65+ and their loved ones

Discover how to become your best advocate.

### THIS IS FOR YOU

#### Support designed with you in mind

Develop skills to help you cope with challenges.

Find tools to help live life beyond your diagnosis at

[ThisIsLivingWithCancer.com](https://ThisIsLivingWithCancer.com)



© 2021 Pfizer Inc.

All rights reserved.

PP-ONC-USA-2315-02



**i** joined  
the **fight**



To every heroic warrior in the battle to defeat cancer, we individually and collectively commit our support. Fight on!

**i** independent bank™  
www.i-bankonline.com • MEMBER FDIC



**THE MARSTON GROUP**  
CPAs & ADVISORS

Proudly supports  
**WEST CANCER FOUNDATION**  
in its  
**FIGHT ON**

The Marston Group is a leading CPA firm providing professional accounting, financial reporting and advisory services to its clients since 1985

The Marston Group, PLC  
Memphis • Nashville • Oxford  
themarstongroup.com  
901-761-3003

**Southland  
Casino Hotel  
proudly supports  
West Cancer  
Foundation**

**SouthlandCasino.com**



**EXPERIENCE IT  
FOR YOURSELF.**

JUST 7 MINUTES FROM  
DOWNTOWN MEMPHIS.

▶ **SCAN TO BOOK YOUR ROOM NOW.**

**2 ½ FOOTBALL FIELDS LONG | 2,300 SLOT MACHINES**

**8 RESTAURANTS & BARS | 50 LIVE TABLE GAMES**

**SPORTSBOOK AREA | 20 STORY HOTEL**

Must be 21+. Play responsibly; for help quitting, call 800-522-4700.

PathForwardIT  
**FIGHT ON** TEAM  
BE CONFIDENT IN YOUR IT.

We **FIGHT ON**  
to make sure **IT**  
is never a barrier  
to treatment.

[PathForwardIT.com](http://PathForwardIT.com)

Lipscomb  Pitts  
INSURANCE  
A Higginbotham Partner



Photos courtesy of West Cancer Foundation

## We fight on together.

Lipscomb & Pitts Insurance is proud to sponsor the West Cancer Foundation where they are helping cancer patients today and funding the treatments of tomorrow.



  
**Creekside**  
HOMES, LLC

Pleased to support West Cancer Foundation



Visit our newest subdivisions,  
Madeline Farms in Piperton &  
Wilson Lake in Arlington

[lpinsurance.com](http://lpinsurance.com) | 901.321.1000 | @lpinsurance



**Healthy Tennesseans.  
Thriving Communities.**

Every day, our faculty, staff, students, and alumni focus on the improving the health of Tennessee. We are training the health care workforce for the future. We are providing care at major hospitals across Tennessee today. Our researchers are seeking out the cures of tomorrow.

[uthsc.edu/nursing](http://uthsc.edu/nursing)



**MEMPHIS FUNERAL HOME & MEMORIAL GARDENS**

*Every Detail Remembered™*

**Dignity**  
MEMORIAL

GINA GAFFNEY  
MANAGER • FUNERAL DIRECTOR  
901.725.0100  
3700 N. GERMANTOWN RD.  
BARTLETT, TN

**WEST FIGHT > ON**

**ONE LOVE • ONE HEART • ONE FIGHT**

*Let's Get Together*

**SATURDAY, SEPTEMBER 9, 2023**  
SHELBY FARMS PARK